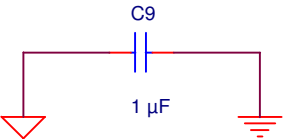


Speaker ground must go to center tap on transformer

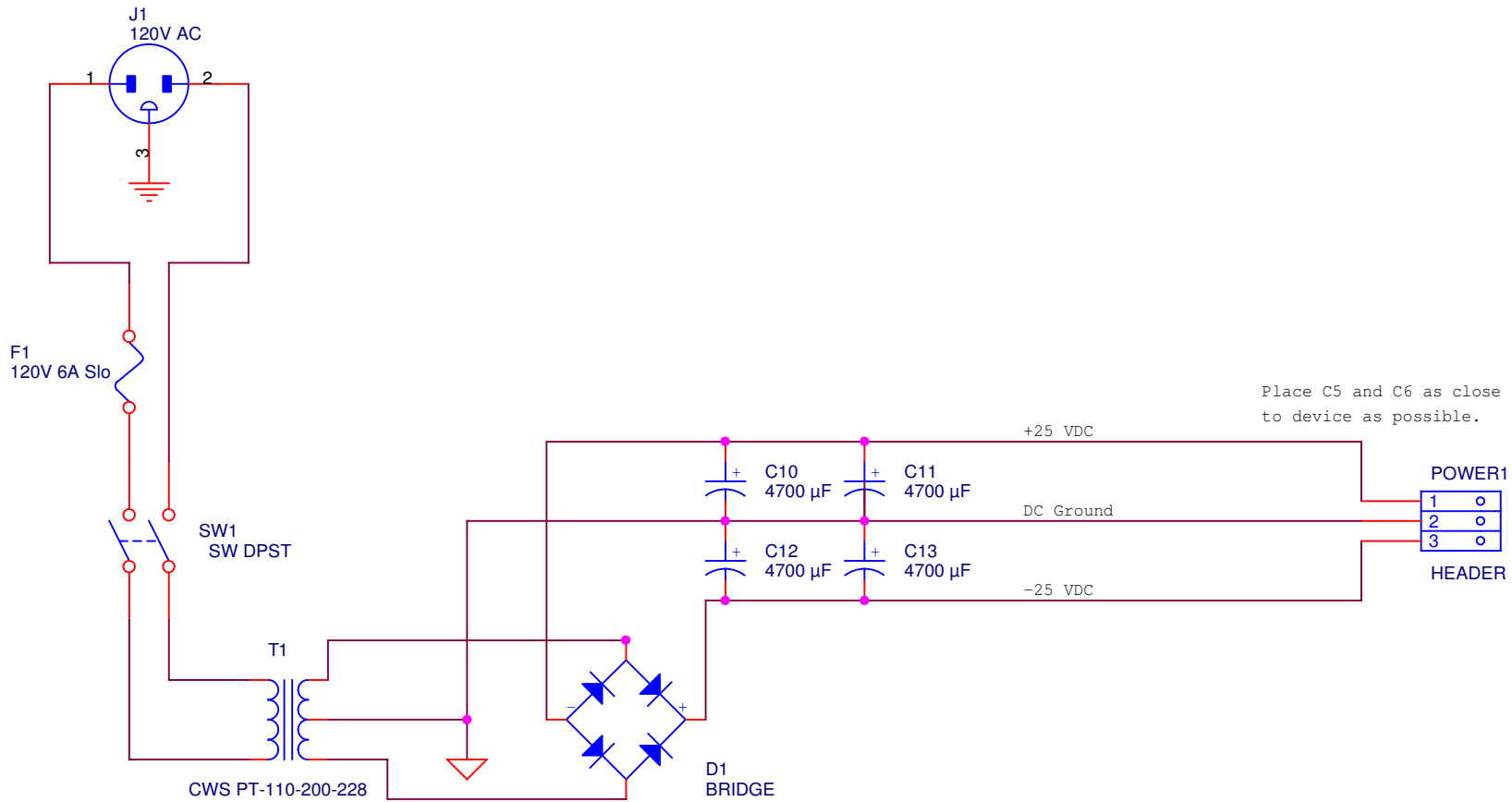
Speaker ground must go to center tap on transformer

Attach to signal ground convergence point



All signal grounds must be made in a star configuration.

Bobby Kinstle		
Title Audio Amplifier		
Size A	Document Number	Rev 2.0
Date:	Thursday, November 04, 2004	Sheet 1 of 2



Bobby Kinstle		
Title		
Full Wave AC Rectifier/Step Down		
Size	Document Number	Rev
A		1.3
Date:	Wednesday, November 03, 2004	Sheet 2 of 2
	2	1